



**MARI-CHA III**

# MARI - CHA III



MARI-CHA III represents a giant leap in design and technology. From the owner's brief to the naval architect's plan was certainly a major challenge: Design a supremely comfortable yacht that is also the fastest of her class. During the period preceding the construction, the interior designer John Munford produced his first drawings and sketches in a luxurious Edwardian style, sublime decor whilst Philippe Briand began his preliminary research to develop this amazing yacht. One of the main objectives was to conceive and build MARI-CHA III as light and solid as possible, without compromising safety aspects.



# *Super Yacht* *Elegant*



Designed by John Munford, her accommodation is superbly executed by Sensation Yacht's skilled cabinetmakers, it includes a large master cabin with ensuite and a smaller cabin with upper lower berth. In addition there are two double ensuite guest cabins.



The living and dining room is forward of the pilot house and large enough to cater to 10 people. Forward are quarters to accommodate eight crew.



Mari-cha III's pilot house includes not only the navigation and communication equipment but also provides shelter with two comfortable benches to relax while enjoying the outside view.

Marble surfaces, beautiful fabrics, "objet d'art" and luxurious accoutrements

# MARI - CHA III



A large master cabin with ensuite and a smaller cabin with upper lower berth.

In addition there are two double ensuite guest cabins.

# *Super Yacht* *Elegant*



have been carefully selected to enhance MARI-CHA III's interior. The interior of the boat and her state of the art entertainment system has been updated to reflect the latest technology.



On MARI-CHA III you will experience the comforts of a large yacht without sacrificing performance.



# MARI - CHA III



Photo: Neil Robinson

Under sail, she reaches 12,5 knots upwind at an apparent wind angle of 20 degrees with only 12 knots of true wind speed. On the reach, she sails comfortably at 17 knots with only 14 knots of true wind. MARI-CHA III has moderate draught for a yacht of her size, giving her the ability to explore most of the world's magnificent anchorages.



Photo: Roger Leen-Hersee

# Super Maxi Magnificent

MARI-CHA III is a Super Yacht of distinction aboard which her guests can cruise comfortably as well as entertain in style and luxury. She will draw attention at any anchorage with her sleek hull and huge ketch rig, that also confers enormous benefits in terms of speed, weight to sail area ratio and efficiency.

Her speed under sail and power warrants fast passage making from one anchorage to the next, fun sailing, and allows for more time to explore, dive and enjoy all aspects of cruising.

Mari-Cha's crew of 7 includes: An experienced captain who has worked on the boat for many years, a top class Chef, an engineer, a Stewardess and 3 deck hands each with their specialty. All have been on the boat for several years and are fully dedicated to making your cruise delightful.



Photo: Neil Robinson



Photo: Neil Robinson

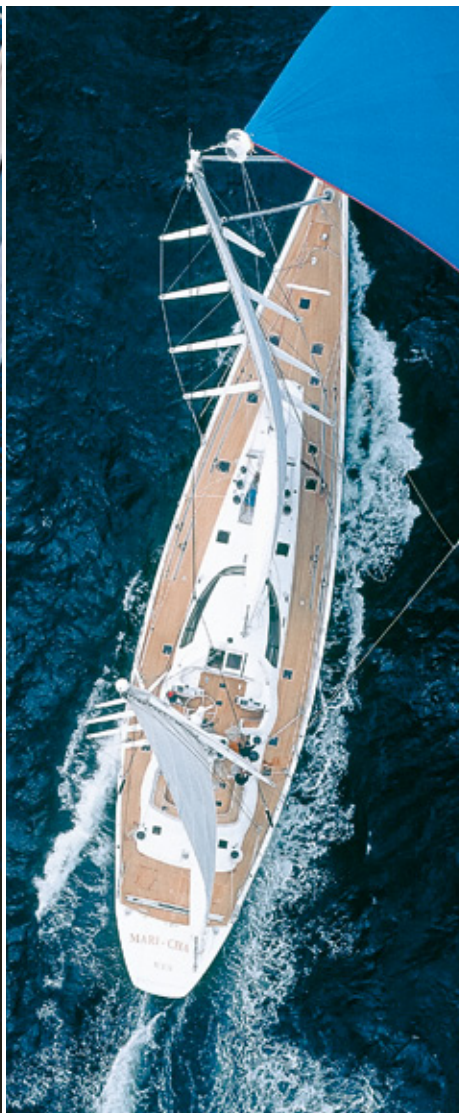
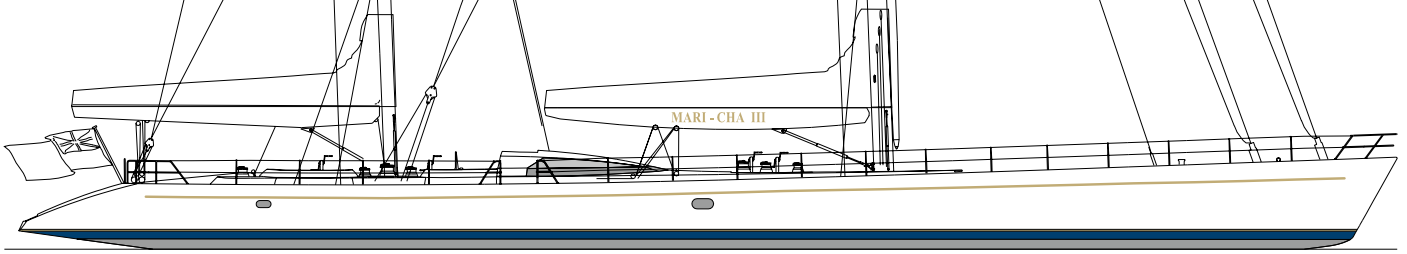


Photo: Ivan Wilkins



# MARI - CHA III

- Launched Autumn 1997
- Builder Sensation Yachts
- Hull construction Marten Marine (carbon composite)
- Architect Philippe Briand
- Interior Designer John Munford Design
- Project manager Jef d'Etiveaud
- Certification ABS hull certificate
- LOA 146 ft 8 in (44.70 m)
- LWL 124 ft 7 in (38.00 m)
- Beam 29 ft 6 in (9.00 m)
- Draft 14 ft 9 in (4.50 m)
- Ballast
  - Fin keel and bulb 90,000 pounds (41.000 Kg)
  - Water ballast 1750 Gal.
- Displacement
  - Cruising 277,200 pounds (126,000 Kg)
  - Racing 240,000 pounds (110,000 Kg)
- Rigging Rod, Riggama and Aramid
- Spars Southern Spars (carbon composite)
- Sail Area
  - Upwind 1,000 m<sup>2</sup>
  - Downwind 1,680 m<sup>2</sup>
- Water tanks 5000 L
- Fuel tanks 9,000 L (2,500 nm range at 10 kts)
- Main engine Caterpillar 600 H.P.  
max speed under power 14.8 kts
- Bowthruster Max Power 50 H.P.
- Generators
  - Northern Lights 40 Kw - Panda 15Kw
  - Hydraulic generator 15Kw
- Water maker HEM 260 l/h
- Air-conditioning Aqua air
- Hydraulic system
  - HPS, Deck Winches, Bow thruster, 15 Kw Alternator
- SSB Sea Co.
- VHF Two Skanti and two portables
- Intercom Through the PABX tel system
- Auto pilot Segatron
- Video systems
  - In the saloon, owner's, crew mess. CCTV exavision
- Hifisystems
  - In Saloon, owner's, Pilot house, Guest cabins, Crew mess
- Deck Gear Lewmar custom and Harken Custom
- Dinghies
  - Custom Kevlar 15.5 hard bottom inflatable with 50 H.P. Yamaha.
  - Zodiac Futura Mk II with 15 H.P. Yamaha

## Electronics

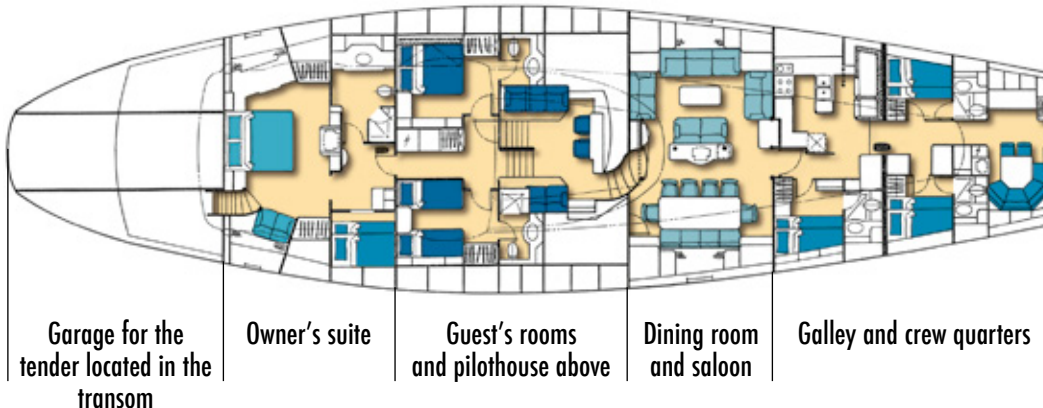
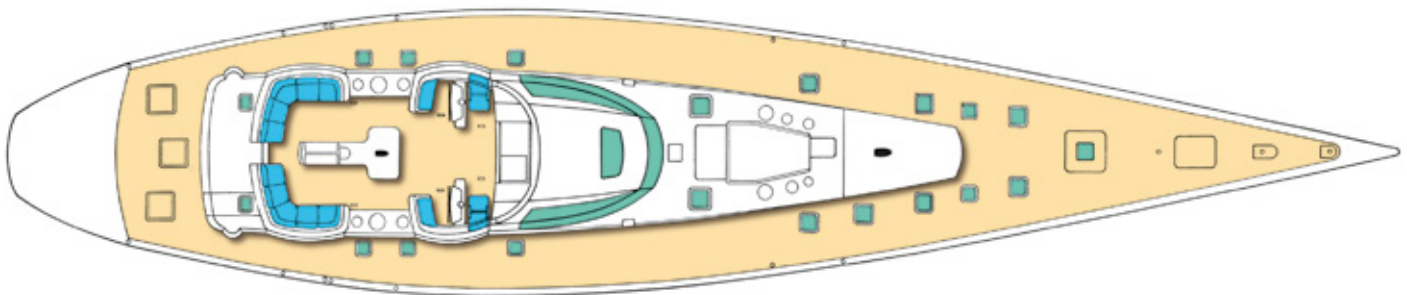
- Computer
  - Power PC Apple with Pentium II board
  - Ethernet throughout the boat
- Central nav
  - B&G Hercules 790 interfaced to the rest of the instruments and to the computer (Max Sea)
- GPS Trimble plus one manual
- Radar Furuno 96 Miles

## Safety

- Complete safety equipment to the standards and British regulations for 25 persons

## Inventories

- Cruising and racing full inventories by North and Voile Systeme/Incidence.



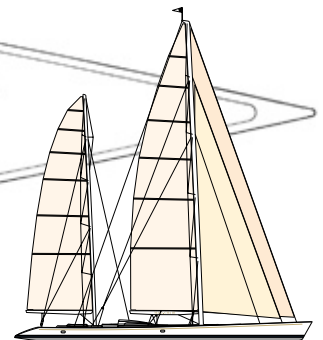
Garage for the tender located in the transom

Owner's suite

Guest's rooms and pilothouse above

Dining room and saloon

Galley and crew quarters



More informations at [www.mari-cha.com](http://www.mari-cha.com)

